



Recently accepted as a member of the Guild of Master Craftsmen, Gault Engineering welcomes new and old customers to their premises at Largy Road, Ahoghill which is easily located on the main road between Randalstown and Portglenone.

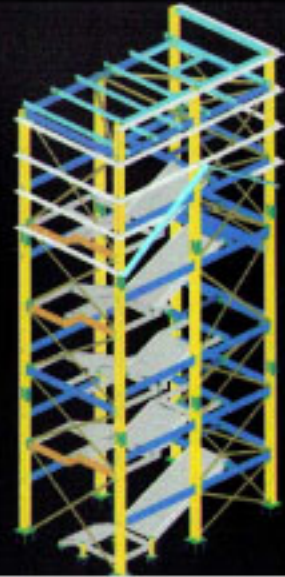
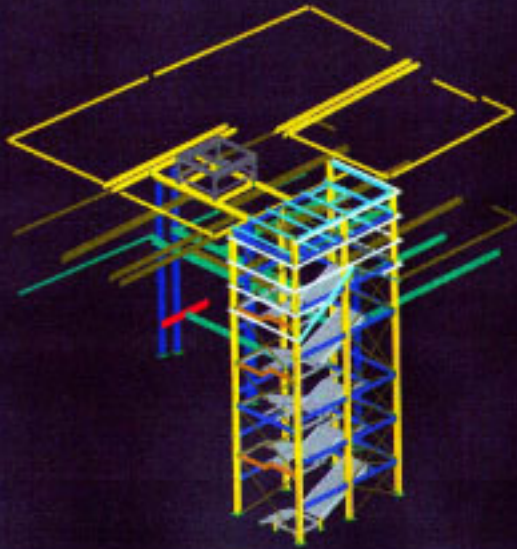
The company has been trading for five years and has built up an excellent reputation by offering personal service and superb craftsmanship.

Offering a range of services to all our clients we specialise in:

- Structural Steelwork — supply and erect
- Cladding
- Stainless steel and mild stainless — handrails
- Metal Staircases – fire escapes, straight staircases and spiral staircases
- Balustrades – internal balustrades, external balustrades with glass or wrought iron panels.
- Automated Gates — cantilever gates, swing gates and sliding gates
- All types of welding
- Metal Gates – double gates, driveway gates, entrance gates, estate gates, side gates, garden gates and single gates.
- Railings - bow top rails, garden railings, hand rails, juliet railings, patio railings, ramp railings, roof top railings and wall top railings
- Security Gates & Grilles – security gates, window security grilles, roller shutters, sliding grilles and burglar bars

We can also provide general engineering and maintenance work and all on-site engineering services

Steel Services



Steel and stainless steel design and fabrication services for construction – industrial, commercial and agricultural.

Gault Engineering is a supplier of structural steel and steel fabrications, to the construction industry throughout Northern Ireland.

Structural Steel

The company's workshop facility near Ballymena is fully equipped to provide a range of iron and steel work for the construction industry. This includes design and production of structural steel and stainless steel structures for a wide range of applications – industrial commercial and agricultural.

In addition, the company continues to undertake contracts for supply and installation of steel gates and railings and all types of welding.

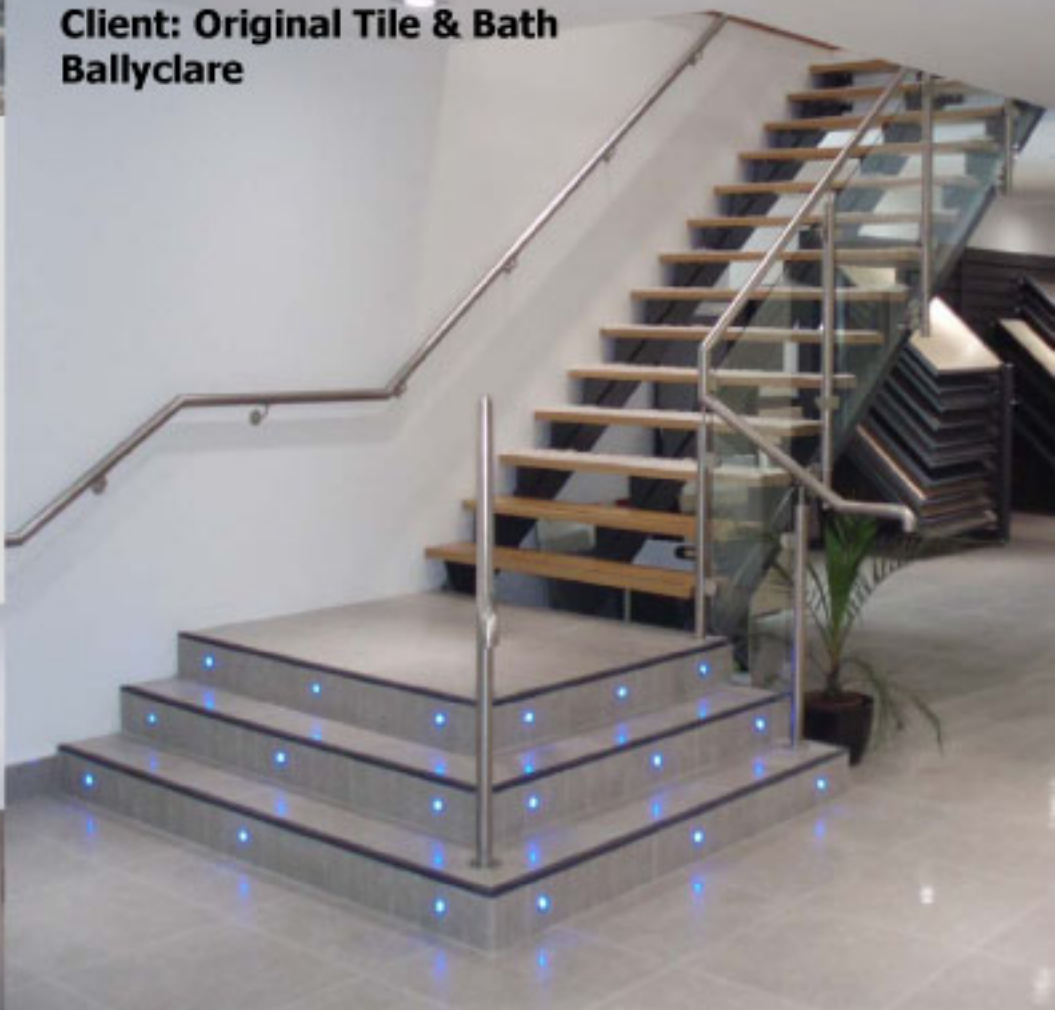




**Client: Original Tile & Bath
Ballyclare**

Original Tile & Bath

Gault carried out all the structural steelwork on this total refit, including the cladding of the architectural panel, staircase and the canopy outside





**Tommy
Hilfiger
Grafton St,
Dublin**

Gault carried out all structural steelwork, staircase and lift on this project

**Client: Tommy Hilfiger,
Grafton St, Dublin**



We will be pleased to meet and discuss with clients and produce bespoke designs in all areas, contact us for an informal chat or to make an appointment on 028 7965 1909 or via our website at www.gaultengineering.com